

**THE COUNCIL OF THE CITY AND COUNTY OF SWANSEA**  
**CYNGOR DINAS A SIR ABERTAWE**  
**UNNAMED Y1875 PARKMILL (SHEPHERDS TO HERITAGE CENTRE LINK**  
**ROAD, SWANSEA)**  
**NOTICE 2024**

**NOTICE** is hereby given that the Council of the City and County of Swansea in pursuance of its powers under the Road Traffic Regulation Act 1984 (as amended) has made an Order. In order for Alun Griffiths Contractors on behalf of Swansea Council's Highways Drainage Section to undertake drainage works, it will be necessary to temporarily close the above road to vehicular traffic.

**SCHEDULE**

**SCHEDULE – TEMPORARY ROAD CLOSURE**  
**UNNAMED Y1875 PARKMILL (SHEPHERDS TO HERITAGE CENTRE LINK**  
**ROAD, SWANSEA)**

Unnamed Y1875 Shepherds to Heritage Centre Link Road from its junction with unnamed Y1881 (link to A4118 South Gower Road) in a North Westerly direction for a distance of approximately 150 metres.

The alternative route for vehicular traffic will be via unnamed Y1881 (link to A4118 South Gower Road) A4118 South Gower Road and the unnamed Y1874, a distance of approximately 350 metres.

Similarly, this route will operate in the reverse direction.

**Access for emergency vehicles to be maintained at all times.**

The maximum duration of the order is 18 months and it is anticipated the work will take 3 weeks to complete effective from Monday 9th September 2024.

9<sup>th</sup> September 2024

**TRACEY MEREDITH**

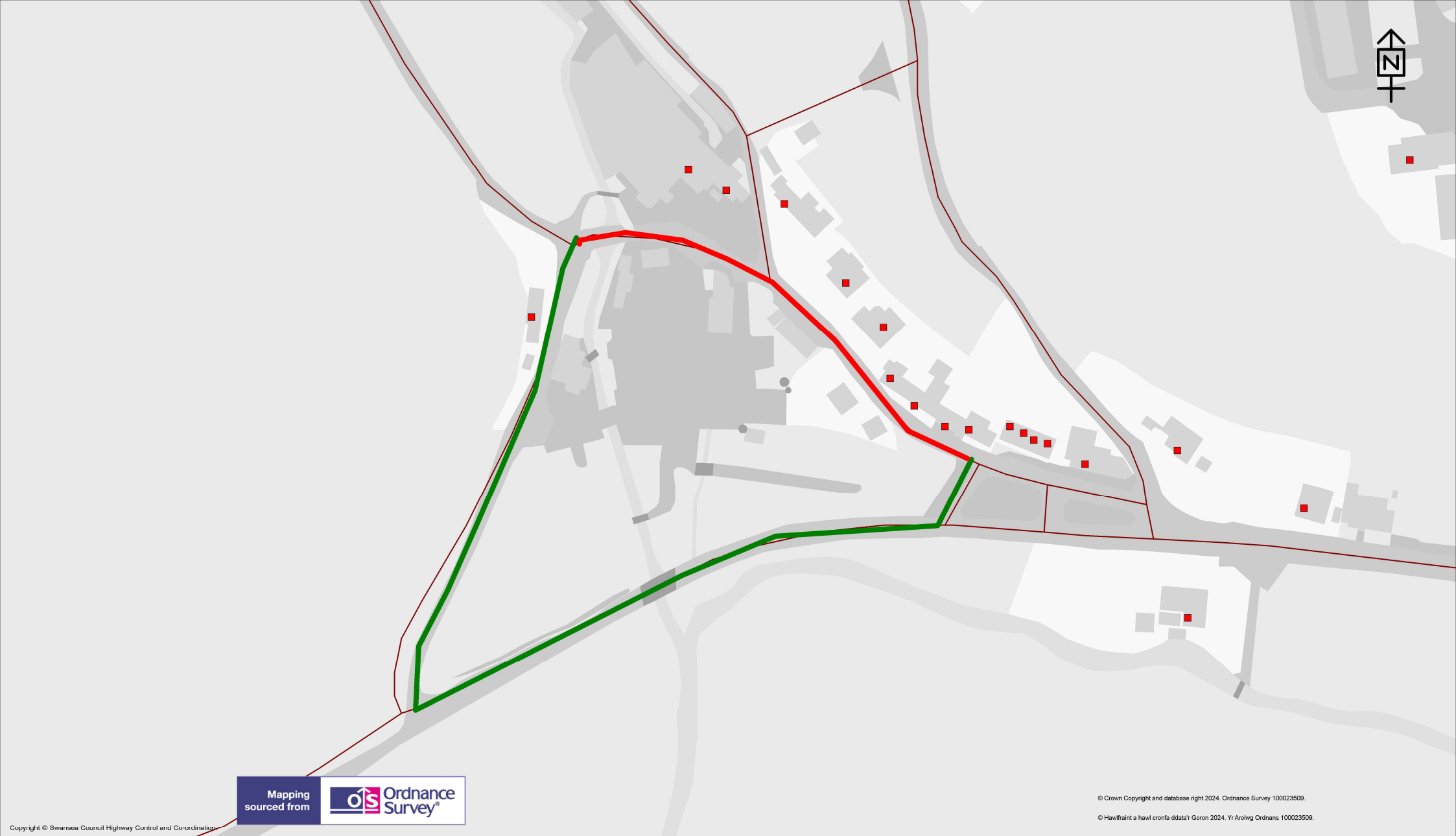
**CHIEF LEGAL OFFICER / PRIF SWYDDOG CYFREITHIOL**

**LEGAL, DEMOCRATIC SERVICES & BUSINESS INTELLIGENCE**




**GWASANAETHAU CYFREITHIOL, DEMOCRATAIDD A DEALLUSRWYDD**

**BUSNES**





© Crown Copyright and database right 2024. Ordnance Survey 100023509.  
© Hawffraint a hawl cronfa ddata'r Goron 2024. Yr Arolwg Ordnans 100023509.

	TEMPORARY TRAFFIC REGULATION ORDER	<div>KEY</div> <div>Temporary Road Closure </div> <div>Alternative Route </div>	Scale 1:1434	
<div>Highways and Transportation</div> <div>Mr Stuart Davies, Head of Highways City and County of Swansea, Station Road, Players Industrial Estate, Clydach, Swansea, SA6 5BJ</div>	Y1875 Parkmill link between Shepherds and Heritage Centre		Drawn GD	Checked GD
			Revision A	Date 10/06/2024
			Dwg/Ref.No. 4096	