

**THE COUNCIL OF THE CITY AND COUNTY OF SWANSEA  
CYNGOR DINAS A SIR ABERTAWE  
TRAFFIC REGULATION ORDER 2025  
VARIOUS LOCATIONS – CLYDACH WARD  
WAITING RESTRICTIONS  
NOTICE 2025**

**NOTICE:** is hereby given that on 21<sup>st</sup> May 2025 The Council of the City and County of Swansea made the above order under the Road Traffic Regulation Act 1984 (as amended) and of all other enabling powers. The order will be effective from 29th May 2025, as set out in the schedules below. A copy of the order and plan may be inspected during office hours at the Civic Centre, Oystermouth Road, Swansea, SA1 3SN. Any person wishing to challenge the validity of the order or procedures used in making this order may apply to the High Court within 6 weeks of the date the order was made.

**SCHEDULES**

**SCHEDULE 1  
REVOCATIONS**

The existing Orders are revoked as far as they are inconsistent with the proposals hereinafter contained which relate to the length or lengths of the road or roads referred to in the schedules hereto.

**TWYN Y BEDW ROAD - NO STOPPING AT ANY TIME EXCEPT FOR BUSES**

On its Western Side from a point 8 metres north of its junction with the northern kerbline of View Road for a distance of 12 metres.

**CLYDACH ROAD – NO STOPPING ON SCHOOL ENTRANCE MARKINGS AT ANY TIME**

**Eastern Side**

From its junction with the western side of Rhyd y Gwin Road for a distance of 44 metres

From a point 58 metres north of its junction with the western side of Rhyd Y Gwin for a distance of 23 metres north.

**RHYD Y GWIN ROAD - NO STOPPING ON SCHOOL ENTRANCE MARKINGS AT ANY TIME**

**Western Side**

From its junction with the eastern side of Clydach Road between points 71 metres and 111 metres in a northerly direction.

**CLYDACH ROAD – NO WAITING MONDAY – FRIDAY 8.00AM – 9.30AM AND 3.00PM – 4.00PM**

On its Western side from the northern boundary of 84 Clydach Road for a distance of 50 metres in a northerly direction.

On its Eastern Side from its junction with the northern boundary of Valley View for a distance of 37 metres in a southerly direction.

**RHYD Y GWIN ROAD – NO WAITING MONDAY – FRIDAY 8.00AM – 9.30AM  
AND 3.00PM – 4.00PM**

On its western side from its junction with the northern kerbline of Clydach Road for a distance of 16 metres in a northerly direction.

On its Eastern Side from its junction with the northern boundary of Valley View for a distance of 19 metres in a northerly direction.

**SCHEDULE 2  
PROHIBITION OF WAITING AT ANY TIME**

**RHYD Y GWIN ROAD**

On its western side from its junction with the northern kerbline of Clydach Road for a distance of 30 metres in a northerly direction.

On its Eastern Side from its junction with the northern boundary of Valley View for a distance of 19 metres in a northerly direction.

**CLYDACH ROAD**

On its Eastern Side from its junction with the northern boundary of Valley View for a distance of 37 metres in a southerly direction.

On its Eastern side from its junction with the western side of Rhyd y Gwin Road to 124 metres in a northerly direction.

On its Western side from a point 11 metres north of northern boundary of 84 Clydach Road for a distance of 148 metres in a northerly direction.

**LON HEDDWCH**

On its northern side from its junction with the western kerbline of Rhyddwen Road to a point 55 metres west of that junction.

On its southern side from its junction with the western kerbline of Rhyddwen Road to a point 10 metres west of that junction.

On its southern side from a point 26 metres west of its junction with the western kerbline of Rhyddwen Road for a distance of 10 metres west.

On its eastern side from a point 101 metres from its junction of the western of Rhyddwen Road for a distance of 38 metres in a northerly direction.

On its western side from its junction of the southern kerbline of Fagwr Isaf for a distance of 28 metres in a southerly direction

On its western side from its junction of the northern of Fagwr Isaf for a distance of 11 metres in a northerly direction

### **FAGWR ISAF**

On its northern side from its junction with the western kerbline of Lon Heddwach for a distance of 11 metres in a westerly direction.

On its southern side from its junction with the western kerbline of Lon Heddwach for a distance of 4 metres in a westerly direction.

From a point 11 metres west of the western kerbline of Lon Heddwach for a distance of 8 metres in a westerly direction.

### **FFORDD ELLEN**

On its eastern side from its junction with the southern kerbline of Lon Heddwach to a point 17 metres southerly direction.

### **RHYDDWEN ROAD**

On its western side from its junction with the southern kerbline of Lon Heddwach for a distance of 10 metres in a southerly direction.

### **LONE ROAD**

On its western side from its junction with the southern kerbline of Tan y Lon for a distance of 13 metres in a southerly direction.

On its western side from its junction with the northern kerbline of Tan y Lon for a distance of 15 metres in a northerly direction.

### **TAN-Y-LON**

On both sides from its junction with the western kerbline of Lone Road for a distance of 15 metres in a westerly direction.

### **ST JOHN'S ROAD**

On its western side from its junction with the southern kerbline of Sybil Street for a distance of 10 metres in a southerly direction.

On its western side from its junction with the northern kerbline of Sybil Street for a distance of 12 metres in a northerly direction.

### **SYBIL STREET**

On its northern side from its junction with the western kerbline of St John's Road for a distance of 11 metres in a westerly direction.

On its southern side from its junction with the western kerbline of St John's Road for a distance of 10 metres in a westerly direction.

### **PONTARDAWE ROAD**

On its north western side from a point 38 metres south west of its junction with the western kerbline with of Capel Road for a distance of 48 metres in a south westerly direction.

On its south eastern side from its junction with the southern kerbline of the access road to Coed Gwilym Park car park for a distance of 12 metres southerly direction

On its south eastern side from its junction with the northern kerbline of the access road to Coed Gwilym Park car park for a distance of 14 metres northerly direction.

### **ACCESS ROAD TO COED GWILYM PARK CAR PARK**

On both sides from its junction with the eastern kerbline of Pontardawe Road for a distance of 10 metres in an easterly direction.

### **QUARR ROAD**

On its southern side from its junction with the eastern kerbline of Waverley Street for a distance of 55 metres southeast of that point.

On its northern side from a point 23 metres west of its junction with the western kerb line of Hebron Road to a point 68 metres west of that point.

### **HEBRON ROAD**

On its eastern side from a point 52 metres north of its junction with the northern kerb line of Clos Y Coedwr for a distance 92 metres north of that point.

On its eastern side from the western abutment of Clydach Bridge for a distance 92 metres west then south of that point.

On its western side from its junction with the northern kerbline of Quarr Road for a distance of 92 metres northeast of that point.

### **WOODSIDE CRESCENT**

On its Northern Side from a point 42 metres from the Western Kerbline of Players Avenue for a distance of 40 metres in a westerly direction.

### **SCHEDULE 3**

### **PERMIT HOLDERS ONLY AT ANY TIME**

### **QUARR ROAD**

On its Western side from a point 30 metres north of its junction with the northern side of Aberclydach Road for a distance of 18 metres in a northerly direction.

#### **SCHEDULE 4**

**LIMITED WAITING BUS/ COACH PARKING – MONDAY TO FRIDAY 8AM – 5PM,  
30 MINUTES NO RETURN WITHIN 30 MINUTES.**

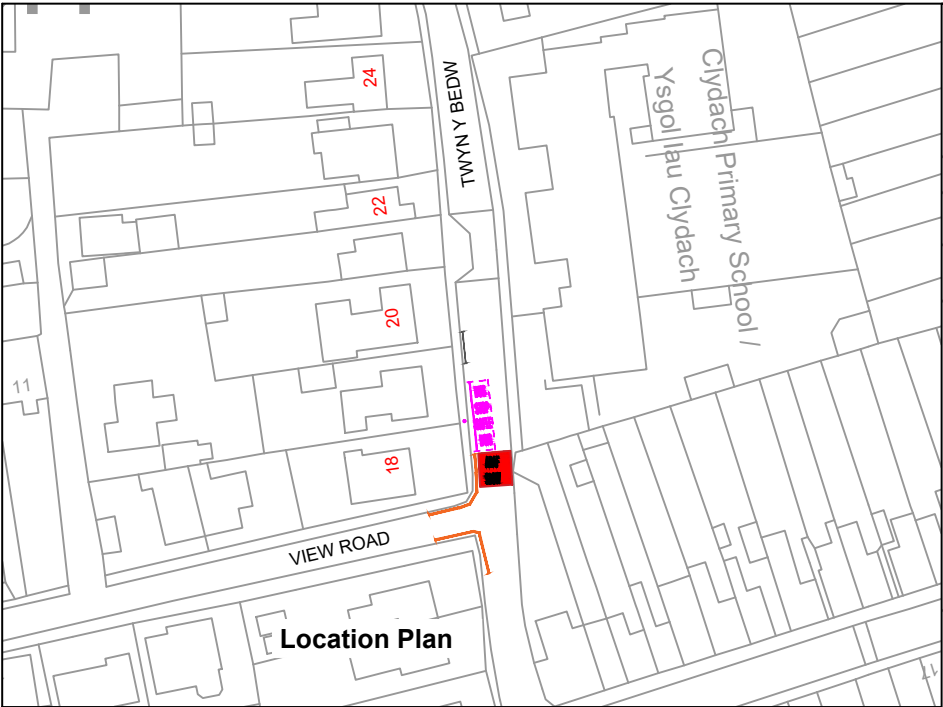
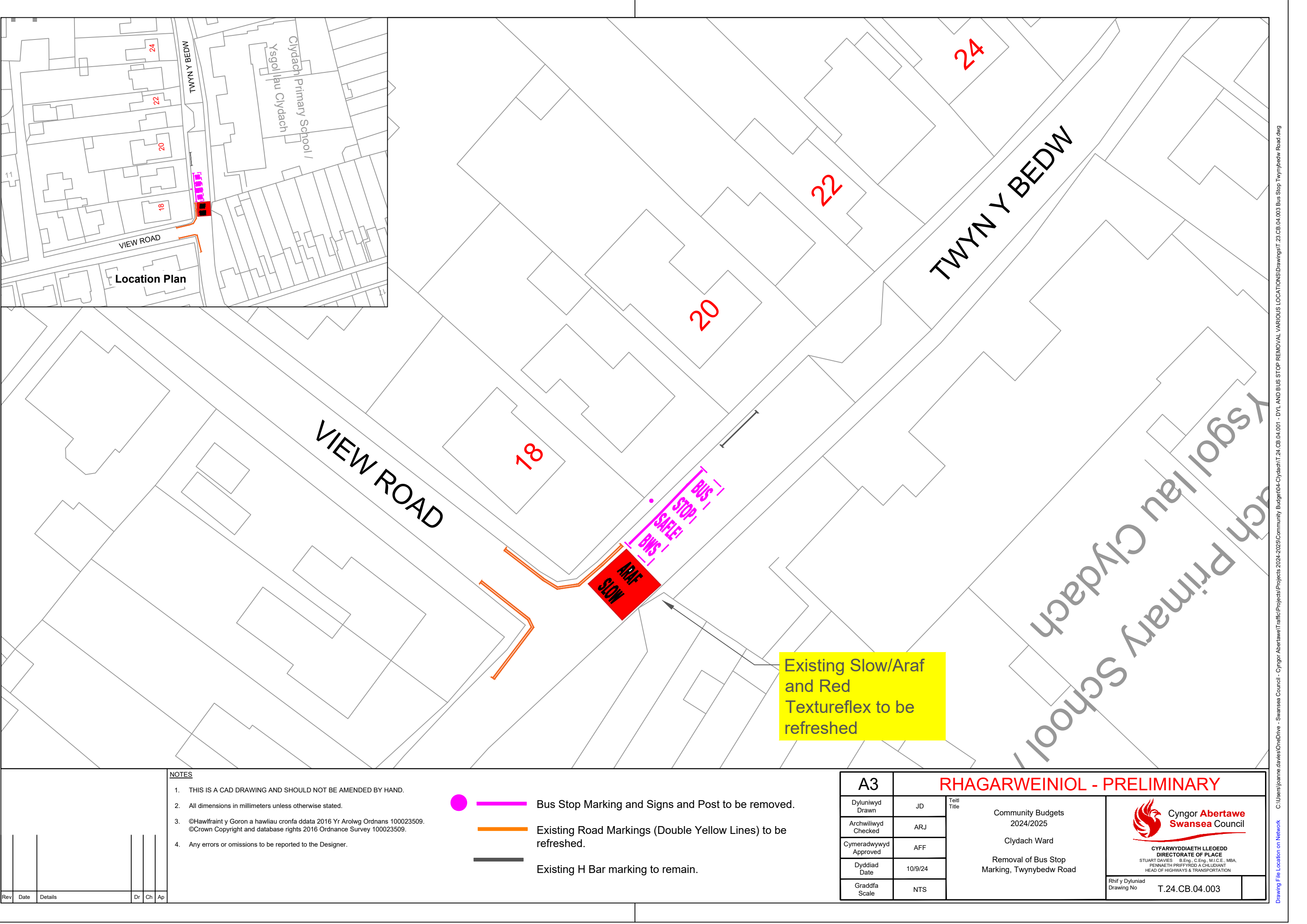
#### **PONTARDAWE ROAD**

On its eastern side from a point 27 metres from its junction with the southern kerbline of the access road to Coed Gwilym Park car park for a distance of 30 metres in a southerly direction.

23<sup>rd</sup> March 2025


D.J. SMITH


**Chief Legal Officer / Prif Swyddog Cyfreithiol  
Legal & Democratic Services**



NOTES

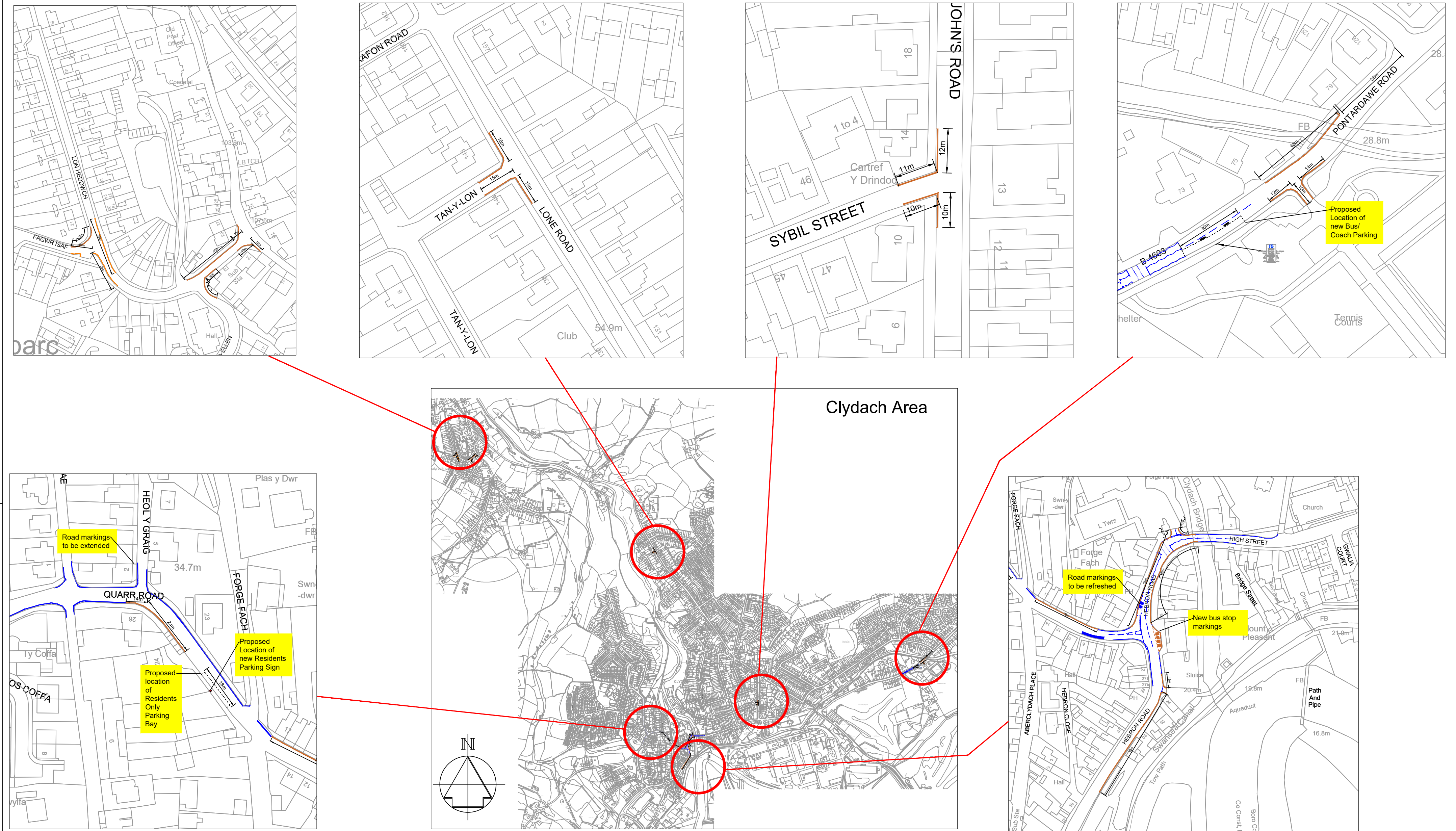
- 1. THIS IS A CAD DRAWING AND SHOULD NOT BE AMENDED BY HAND.
- 2. All dimensions in millimeters unless otherwise stated.
- 3. ©Hawlfraint y Goron a hawliau cronfa ddata 2016 Yr Arolwg Ordnans 100023509.  
©Crown Copyright and database rights 2016 Ordnance Survey 100023509.
- 4. Any errors or omissions to be reported to the Designer.

-   Bus Stop Marking and Signs and Post to be removed.
-  Existing Road Markings (Double Yellow Lines) to be refreshed.
-  Existing H Bar marking to remain.

A3		RHAGARWEINIOL - PRELIMINARY		
Dyluniwyd Drawn	JD	Teitl Title  Community Budgets 2024/2025  Clydach Ward  Removal of Bus Stop Marking, Twynbedw Road	<div><div>Cyngor <b>Abertawe</b> <b>Swansea</b> Council</div></div> <div>CYFARWYDDIAETH LLEOEDD DIRECTORATE OF PLACE STUART DAVIES B.Eng., C.Eng., M.I.C.E., MBA, PENNAETH PRIFYRDD A CHLUDIAINT HEAD OF HIGHWAYS &amp; TRANSPORTATION</div>	
Archwiliwyd Checked	ARJ			
Cymeradwywyd Approved	AFF			
Dyddiad Date	10/9/24			
Graddfa Scale	NTS			
		Rhif y Dyluniad Drawing No	T.24.CB.04.003	

Rev	Date	Details	Dr	Ch	Ap





E	Apr'25	Following an email request from Cllr Rowlands, DYL reduced along southern kerbline of Fagwr Isaf (e-mail Z3-04-25)	JD	ARJ	AFF
D	Nov'24	Following an email request from Cllr Walker, coach parking bay added on Pontardawe Road	JD	ARJ	AFF
C	Oct'24	Following an email request from Cllr Bailey add additional RP bay on Quarr Road	JD	ARJ	AFF
B	Sept'24	Following discussion with Cllr Rowlands DYL reduced on Lon Heddwach	JD	ARJ	AFF
A	Apr'24	Following e-mail from Cllr Bailey additional notes added, extra section of lining on Quarr Road and bus stop clearway markings added to drawing	JD	ARJ	AFF
Rev	Date	Details	Dr	Ch	Ap

- NOTES**
1. THIS IS A CAD DRAWING AND SHOULD NOT BE AMENDED BY HAND.
  2. All dimensions in millimeters unless otherwise stated.
  3. ©Hawffraint y Goron a hawliau cronfa ddata 2016 Yr Arolwg Ordnans 100023509. ©Crown Copyright and database rights 2016 Ordnance Survey 100023509.
  4. Any errors or omissions to be reported to the Designer.



Proposed Prohibition of Waiting At Any Time  
Traffic Regulation Order

Existing road markings/ Traffic Regulation  
Orders

A2

Dyluniwyd Drawn

Archwiliwyd Checked

Cymeradwywyd Approved

Dyddiad Date

Graddfa Scale

JD

ARJ

AFF

Mar'24

NTS

RHAGARWEINIOL - PRELIMINARY

Community Budget  
2024/25

Clydach Ward  
Various Locations  
Proposed  
Traffic Regulation Orders

Cyngor Abertawe  
Swansea Council

CYFARWYDDIAETH LLEOEDD  
DIRECTORATE OF PLACE  
STUART DAVIES B.Eng., C.Eng., M.I.C.E., MBA,  
PENNAETH PRIFYRDD A CHLUDIANT  
HEAD OF HIGHWAYS & TRANSPORTATION

Rhif y Dyluniad  
Drawing No

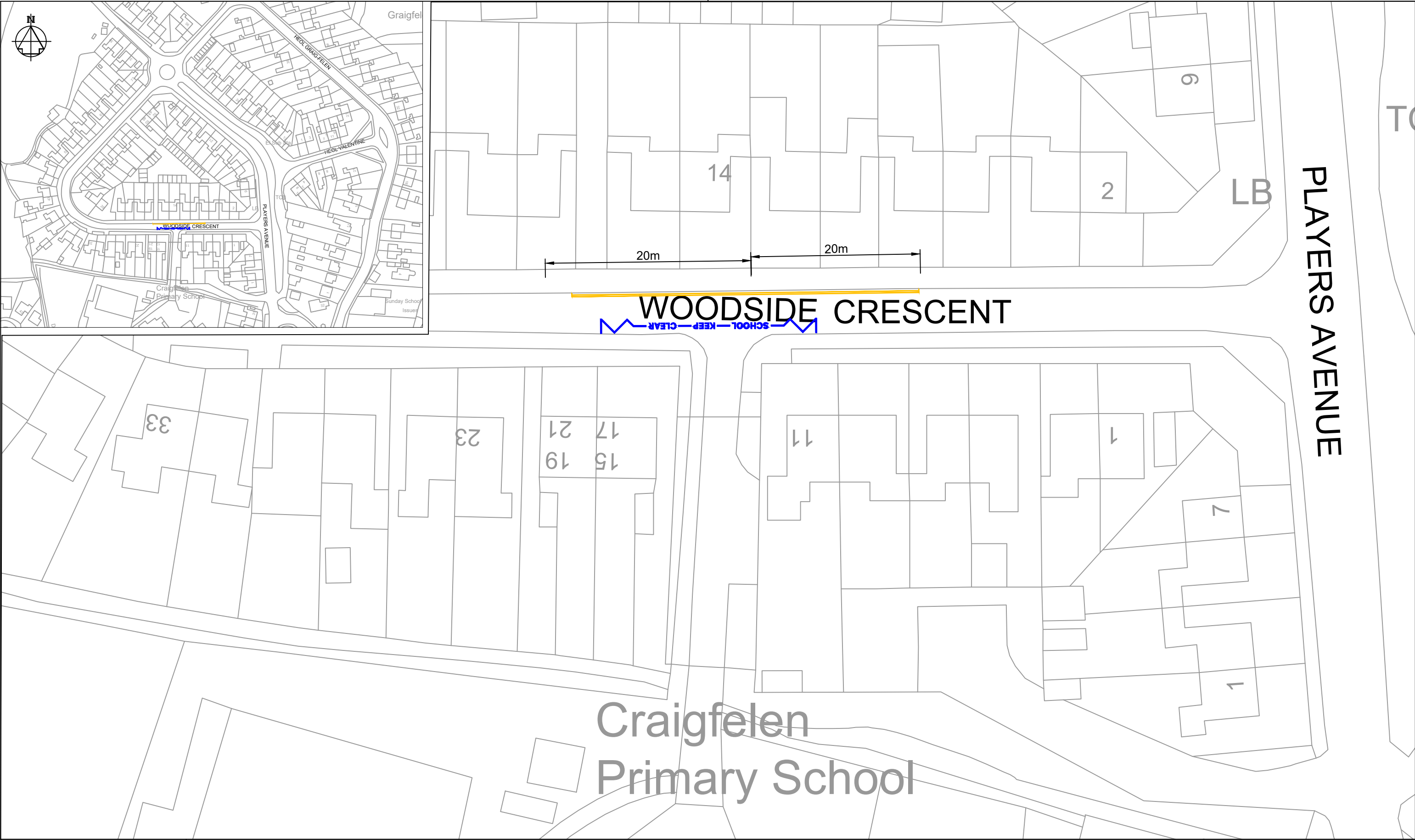
T.24.CB.04.001

E

C:\Users\andrew.james\OneDrive - Swansea Council - Cyngor Abertawe\Traffic\Projects\Community Budget\04-Clydach\T.24.CB.04.001 - DYL AND BUS STOP REMOVAL VARIOUS LOCATIONS\Drawings

Drawing File Location on Network






Rev	Date	Details	Dr	Ch	Ap

**NOTES**

- THIS IS A CAD DRAWING AND SHOULD NOT BE AMENDED BY HAND.
- All dimensions in metres unless otherwise stated.
- ©Hawlfraint y Goron a hawliau cronfa ddata 2024 Yr Arolwg Ordnans AC0000822618.  
©Crown Copyright and database rights 2024 Ordnance Survey AC0000822618.
- Any errors or omissions to be reported to the Designer.

Existing Traffic Regulation Order

Proposed Prohibition of Waiting At Any Time


<b>A3</b>		<b>RWADAETH I DROIC ONSERMOTAR</b>	
Dyluniwyd Drawn	ARJ	Teitl Title	Community Budgets 2024/25  Clydach Ward  Woodside Crescent  Proposed Traffic Regulation Order
Archwiliwyd Checked			
Cymeradwywyd Approved	AFF		
Dyddiad Date	Jul'24		
Graddfa Scale			
		 <b>CYFARWYDDIAETH LLEOEDD</b> <b>DIRECTORATE OF PLACE</b> STUART DAVIES   B.Eng., C.Eng., M.I.C.E., MBA. PENNAETH PRIFYFYRDD A CHLUDIANT HEAD OF HIGHWAYS & TRANSPORTATION	
		Rhif y Dyluniad Drawing No	T.24.CB.04.004





Rev	Date	Details	Dr	Ch	Ap

- NOTES
- THIS IS A CAD DRAWING AND SHOULD NOT BE AMENDED BY HAND.
  - All dimensions in millimeters unless otherwise stated.
  - ©Hawffraint y Goron a hawliau cronfa ddata 2016 Yr Arolwg Ordnans 100023509.  
©Crown Copyright and database rights 2016 Ordnance Survey 100023509.
  - Any errors or omissions to be reported to the Designer.

<b>A3</b>		<b>RHAGARWEINIOL - PRELIMINARY</b>	
Dyluniwyd Drawn	ARJ	Teitl Title Community Budgets 2024/2025  Old School Site  Craig Cefn Parc  Proposed Traffic Regulation Orders	 <b>CYFARWYDDIAETH LLEOEDD</b> <b>DIRECTORATE OF PLACE</b> STUART DAVIES B.Eng., C.Eng., M.I.C.E., MBA. PENNAETH PRIFYRDOD A CHILDIANT HEAD OF HIGHWAYS & TRANSPORTATION
Archwiliwyd Checked			
Cymeradwywyd Approved	AFF		
Dyddiad Date	Aug'23		
Graddfa Scale	NTS	Rhif y Dyluniad Drawing No	T.24.CB.04.002

## **STATEMENT OF REASONS**

### **Notice of Intent for the Traffic Regulation Order**

#### **PROPOSED TRAFFIC REGULATION ORDERS VARIOUS LOCATIONS - CLYDACH WARD**

The provision of double yellow lines at these locations is to improve road safety at road junctions or bends in the road by protecting sight lines, or for ensuring the unobstructed movement of traffic.

#### **Extract from RTRA 1984**

##### **2 What a traffic regulation order may provide.**

(1) A traffic regulation order may make any provision prohibiting, restricting or regulating the use of a road, or of any part of the width of a road, by vehicular traffic, or by vehicular traffic of any class specified in the order,—

(a) either generally or subject to such exceptions as may be specified in the order or determined in a manner provided for by it, and

(b) subject to such exceptions as may be so specified or determined, either at all times or at times, on days or during periods so specified.

**THE COUNCIL OF THE CITY  
AND COUNTY OF SWANSEA  
CYNGOR DINAS A SIR ABERTAWE**



**TRAFFIC REGULATION ORDER  
VARIOUS LOCATIONS – CLYDACH WARD  
WAITING RESTRICTIONS  
ORDER 2025**

**DVT-00279288/AVR**

**THE COUNCIL OF THE CITY  
AND COUNTY OF SWANSEA  
CYNGOR DINAS A SIR ABERTAWE  
TRAFFIC REGULATION ORDER  
VARIOUS LOCATIONS – CLYDACH WARD  
WAITING RESTRICTIONS  
ORDER 2025**

**THE COUNCIL OF THE CITY AND COUNTY OF SWANSEA** (hereinafter called “the Council”) in exercise of its powers under the Road Traffic Regulation Act 1984, as amended (hereinafter referred to as “the 1984 Act”), the Traffic Management Act 2004 (“the 2004 Act”), the Local Government (Miscellaneous Provisions) Act 1976 (“the 1976 Act”) and all other enabling powers, and after consultation with the Chief Officer of Police in accordance with Part III of Schedule 9 and Section 124 of the 1984 Act hereby makes the following Order.

**SECTION 1 – PRELIMINARY**

Citation and commencement

1. This Order shall come into operation on 29<sup>th</sup> May 2025 and may be cited as the Council of the City and County of Swansea, Various Locations – Clydach Ward (Waiting Restrictions), Swansea Order 2025

Definitions

2. In this order, except where the context otherwise requires, the following expressions have the meaning hereby respectively assigned to them:

“Bus” & “Private Hire Coaches” shall have the same meaning as in Section 1 of the Public Passenger Vehicles Act 1981;

“Civil Enforcement Officer” has the same meaning as in Section 63A of the 1984 Act and by virtue of Section 76 of the 2004 Act a Civil Enforcement Officer appointed under Section 63A of the 1984 Act is a Civil Enforcement Officer in relation to parking contraventions;

“Disabled Person’s Vehicle” has the same meaning as in the Local Authorities’ Traffic Orders (Exemption for Disabled Persons) (Wales) Regulations 2000;

“Disabled Person’s Badge” has the same meaning as in the Disabled Persons (Badges for Motor Vehicles)(Wales) Regulation 2000;



“Parking Disc” means a disc and time clock (where appropriate) issued by a local authority complying with the requirements of the British Standard Specifications for Parking Discs to comply with the European Blue Badge Scheme being a disc coloured blue and capable of showing the quarter hour period during which a period of waiting begins;

“Parking Permit” means a Virtual Parking Permit or Physical Permit issued by the Council covering the relevant length of road and is displayed in the Relevant Position;

“Physical Parking Permit” means a paper permit that the Council has issued to a resident who has satisfied the Council, by formal application;

“Relevant Position” in respect of:-

- (a) a Disabled Person’s Badge and parking disc has the same meaning as in the Local Authorities’ Traffic Orders (Exemptions for Disabled Persons) (Wales) Regulations 2000;
- (b) a Physical Parking Permit means exhibited on the windscreen, dashboard or fascia of the vehicle or, where the vehicle does not have a windscreen, dashboard or fascia, in a conspicuous position on the vehicle so that the whole of the information on the front of the permit is clearly legible from outside the vehicle; and
- (c) a Waiver means exhibited on the windscreen, dashboard or fascia of the vehicle or, where the vehicle does not have a windscreen, dashboard or fascia, in a conspicuous position on the vehicle so that the whole of the information on the front of the waiver is clearly legible from outside the vehicle;

"Virtual Parking Permit" means an electronic record of parking ticket, permit or dispensation issued and confirmed by the Council to exempt a vehicle from a restriction or to make payment other than on site covered in the provisions of this order, under the terms applicable at the time of issue. A Virtual Parking Permit may be obtained by any of the methods provided from time to time by the Council and to be valid must be registered on an account in an electronic database approved by the Council with an indication that the permit has been issued and validated in accordance with Council procedures.

“Waiver” means a Waiver issued by the Council in respect of vehicles being used for building maintenance repair shop fitting or other industrial or demolition operations and the Council may charge for such waiver such charge to be determined from time to time by resolution of the Council or relevant Committee thereof;

### Interpretation

3. Except where otherwise stated, any reference in this Order to a numbered Article or Schedule is a reference to the Article or Schedule bearing that number in this Order
4. The Interpretation Act 1978 shall apply for the interpretation of this Order as it applies for the Interpretation of an Act of Parliament
5. The prohibitions and restrictions imposed by this Order shall be in addition to and not in derogation of any other prohibition or restriction whether made under the 1984 Act or otherwise

## **SECTION 2 – PROHIBITION OF WAITING AT ANY TIME**

6. Save as provided in Articles 7 and 8 no person shall, except upon the direction or with the permission of a Civil Enforcement Officer, police officer in uniform, or a person authorised by the Council, cause or permit any vehicle to wait at any time on the length or lengths of the road or roads referred to in Schedule 2 hereto.

### Exemptions

7. Nothing in Article 6 of this Order shall render it unlawful to cause or permit any vehicle to wait on the side or sides or length or lengths of the road or roads specified therein for as long as may be necessary to enable:-
  - (a) the vehicle, if it cannot conveniently be used for such purpose in any other road, to be used in connection with any of the following operations namely:-
    - (i) building, maintenance, repair, shop fitting or other industrial or demolition operations with a Waiver issued by the Council and displayed in the Relevant Position on the windscreen of the vehicle;
    - (ii) the removal of any obstruction to traffic;

- (iii) the laying, erection, alteration or repair in or on land adjacent to the said lengths or sides of the road of any sewer or any main pipe or apparatus for the supply of water, gas electricity or of any telecommunications apparatus as defined by the Telecommunications Act 1984; or
    - (iv) a vehicle being used for police, ambulance, fire brigade or other emergency purposes;
  - (b) the vehicle if it cannot conveniently be used for such purpose in any other road, to be used in connection with the service of a local authority or of a water authority in pursuance of its statutory powers and duties;
  - (c) the vehicle of the Royal Mail or other universal services provider as defined in Section 27 of the Postal Services Act 2011 to be used for the purpose of delivering or collecting mail; or
  - (d) vehicles picking up and dropping off passengers.
8. Nothing in Article 6 of this Order shall render it unlawful to cause or permit a Disabled Person's Vehicle which displays in the Relevant Position a Disabled Persons Badge and a Parking Disc (on which the driver, or other person in charge of the vehicle, has marked the time at which the period of waiting began) to wait on lengths of sides of roads referred to in the Article for a period not exceeding 3 hours (not being a period separated by an interval of less than 1 hour from the previous period of waiting by the same vehicle on the same length of side of road on which that vehicle had previously been waiting).

### **SECTION 3 - PERMIT HOLDERS ONLY AT ANY TIME**

9. Save as provided in Articles 11 and 12 no person shall, except upon the direction or with the permission of a Civil Enforcement Officer, police officer in uniform, or a person authorised by the Council, cause or permit any vehicle to stop at any time on any of the length or lengths of the road or roads referred to in Schedule 3 hereto.
10. Where Article 9 applies no person shall, except upon the direction or with the permission of a Civil Enforcement Officer, police officer in uniform, or a person

authorised by the Council, cause or permit any vehicle displaying a Disabled Person's Badge to wait within a designated permit only parking bay.

### Exemptions

11. Nothing in Article 9 of this Order shall render it unlawful to cause or permit a vehicle displaying a Physical Parking Permit in the Relevant Position or subject to a Virtual Parking Permit covering the specified area to stop on the side or sides or length or lengths of the road or roads specified in Schedule 3.
12. Nothing in Article 9 of this Order shall render it unlawful to cause or permit any vehicle to stop on the side or sides or length or lengths of the road or roads specified therein for as long as may be necessary to enable:-
  - (a) the vehicle, if it cannot conveniently be used for such purpose in any other road, to be used in connection with any of the following operations namely:-
    - (i) building, maintenance, repair, shop fitting or other industrial or demolition operations with a Waiver issued by the Council and displayed in the Relevant Position on the windscreen of the vehicle;
    - (ii) the removal of any obstruction to traffic;
    - (iii) the laying, erection, alteration or repair in or on land adjacent to the said lengths or sides of the road of any sewer or any main pipe or apparatus for the supply of water, gas electricity or of any telecommunications apparatus as defined by the Telecommunications Act 1984
    - (iv) a vehicle being used for police, Ambulance, fire brigade or other emergency purposes
  - (b) the vehicle if it cannot conveniently be used for such purpose in any other road, to be used in connection with the service of a local authority or of a water authority in pursuance of its statutory powers and duties.
  - (c) the vehicle of the Royal Mail or other universal services provider as defined in Section 27 of the Postal Services Act 2011 to be used for the purpose of delivering or collecting mail.
  - (d) vehicles picking up and dropping off passengers

### **SECTION 4 - LIMITED WAITING BUS/ COACH PARKING – MONDAY TO FRIDAY 8AM – 5PM, 30 MINUTES NO RETURN WITHIN 30 MINUTES**



13. Save as provided in Article 15 no person shall, except upon the direction or with the permission of a Civil Enforcement Officer, police officer in uniform, or a person authorised by the Council, cause or permit any vehicle to wait between 8am to 5pm from Monday to Friday inclusive on the length or lengths of the road or roads referred to in Schedule 4.

#### Exemptions

14. Nothing in Article 13 of this Order shall render it unlawful to cause or permit a Bus or Private Hire Coach to wait between 8am to 5pm from Monday to Friday inclusive for a period of 30 minutes separated by an interval of 30 minutes.

15. Nothing in Article 13 of this Order shall render it unlawful to cause or permit any vehicle to wait on the side or sides or length or lengths of the road or roads specified therein for as long as may be necessary to enable:-

- (a) the vehicle, if it cannot conveniently be used for such purpose in any other road, to be used in connection with any of the following operations namely:-
  - (i) building, maintenance, repair, shop fitting or other industrial or demolition operations with a Waiver issued by the Council and displayed in the Relevant Position on the windscreen of the vehicle;
  - (ii) the removal of any obstruction to traffic;
  - (iii) the laying, erection, alteration or repair in or on land adjacent to the said lengths or sides of the road of any sewer or any main pipe or apparatus for the supply of water, gas electricity or of any telecommunications apparatus as defined by the Telecommunications Act 1984
  - (iv) a vehicle being used for police, Ambulance, fire brigade or other emergency purposes
- (b) the vehicle if it cannot conveniently be used for such purpose in any other road, to be used in connection with the service of a local authority or of a water authority in pursuance of its statutory powers and duties.
- (c) the vehicle of the Royal Mail or other universal services provider as defined in Section 27 of the Postal Services Act 2011 to be used for the purpose of delivering or collecting mail.
- (d) vehicles picking up and dropping off passengers

## **REVOCATION**

16. The existing Orders are revoked insofar as they are inconsistent with the proposals contained in the schedules hereto and insofar as they relate to the length or lengths of the road or roads referred to in the Schedule hereto.

## **SCHEDULES**

### **SCHEDULE 1 REVOCATIONS**

The existing Orders are revoked as far as they are inconsistent with the proposals hereinafter contained which relate to the length or lengths of the road or roads referred to in the schedules hereto.

#### **TWYN Y BEDW ROAD - NO STOPPING AT ANY TIME EXCEPT FOR BUSES**

On its Western Side from a point 8 metres north of its junction with the northern kerbline of View Road for a distance of 12 metres.

#### **CLYDACH ROAD – NO STOPPING ON SCHOOL ENTRANCE MARKINGS AT ANY TIME**

##### **Eastern Side**

From its junction with the western side of Rhyd y Gwin Road for a distance of 44 metres

From a point 58 metres north of its junction with the western side of Rhyd Y Gwin for a distance of 23 metres north.

#### **RHYD Y GWIN ROAD - NO STOPPING ON SCHOOL ENTRANCE MARKINGS AT ANY TIME**

##### **Western Side**

From its junction with the eastern side of Clydach Road between points 71 metres and 111 metres in a northerly direction.

#### **CLYDACH ROAD – NO WAITING MONDAY – FRIDAY 8.00AM – 9.30AM AND 3.00PM – 4.00PM**

On its Western side from the northern boundary of 84 Clydach Road for a distance of 50 metres in a northerly direction.

On its Eastern Side from its junction with the northern boundary of Valley View for a distance of 37 metres in a southerly direction.

#### **RHYD Y GWIN ROAD – NO WAITING MONDAY – FRIDAY 8.00AM – 9.30AM AND 3.00PM – 4.00PM**

On its western side from its junction with the northern kerbline of Clydach Road for a distance of 16 metres in a northerly direction.

On its Eastern Side from its junction with the northern boundary of Valley View for a distance of 19 metres in a northerly direction.

## **SCHEDULE 2**

### **PROHIBITION OF WAITING AT ANY TIME**

## **RHYD Y GWIN ROAD**

On its western side from its junction with the northern kerbline of Clydach Road for a distance of 30 metres in a northerly direction.

On its Eastern Side from its junction with the northern boundary of Valley View for a distance of 19 metres in a northerly direction.

## **CLYDACH ROAD**

On its Eastern Side from its junction with the northern boundary of Valley View for a distance of 37 metres in a southerly direction.

On its Eastern side from its junction with the western side of Rhyd y Gwin Road to 124 metres in a northerly direction.

On its Western side from a point 11 metres north of northern boundary of 84 Clydach Road for a distance of 148 metres in a northerly direction.

## **LON HEDDWCH**

On its northern side from its junction with the western kerbline of Rhyddwen Road to a point 55 metres west of that junction.

On its southern side from its junction with the western kerbline of Rhyddwen Road to a point 10 metres west of that junction.

On its southern side from a point 26 metres west of its junction with the western kerbline of Rhyddwen Road for a distance of 10 metres west.

On its eastern side from a point 101 metres from its junction of the western of Rhyddwen Road for a distance of 38 metres in a northerly direction.

On its western side from its junction of the southern kerbline of Fagwr Isaf for a distance of 28 metres in a southerly direction

On its western side from its junction of the northern of Fagwr Isaf for a distance of 11 metres in a northerly direction

## **FAGWR ISAF**

On its northern side from its junction with the western kerbline of Lon Heddwach for a distance of 11 metres in a westerly direction.

On its southern side from its junction with the western kerbline of Lon Heddwach for a distance of 4 metres in a westerly direction.

From a point 11 metres west of the western kerbline of Lon Heddwach for a distance of 8 metres in a westerly direction.

## **FFORDD ELLEN**



On its eastern side from its junction with the southern kerbline of Lon Heddwach to a point 17 metres southerly direction.

### **RHYDDWEN ROAD**

On its western side from its junction with the southern kerbline of Lon Heddwach for a distance of 10 metres in a southerly direction.

### **LONE ROAD**

On its western side from its junction with the southern kerbline of Tan y Lon for a distance of 13 metres in a southerly direction.

On its western side from its junction with the northern kerbline of Tan y Lon for a distance of 15 metres in a northerly direction.

### **TAN-Y-LON**

On both sides from its junction with the western kerbline of Lone Road for a distance of 15 metres in a westerly direction.

### **ST JOHN'S ROAD**

On its western side from its junction with the southern kerbline of Sybil Street for a distance of 10 metres in a southerly direction.

On its western side from its junction with the northern kerbline of Sybil Street for a distance of 12 metres in a northerly direction.

### **SYBIL STREET**

On its northern side from its junction with the western kerbline of St John's Road for a distance of 11 metres in a westerly direction.

On its southern side from its junction with the western kerbline of St John's Road for a distance of 10 metres in a westerly direction.

### **PONTARDAWE ROAD**

On its north western side from a point 38 metres south west of its junction with the western kerbline with of Capel Road for a distance of 48 metres in a south westerly direction.

On its south eastern side from its junction with the southern kerbline of the access road to Coed Gwilym Park car park for a distance of 12 metres southerly direction

On its south eastern side from its junction with the northern kerbline of the access road to Coed Gwilym Park car park for a distance of 14 metres northerly direction.

### **ACCESS ROAD TO COED GWILYM PARK CAR PARK**

On both sides from its junction with the eastern kerblin of Pontardawe Road for a distance of 10 metres in an easterly direction.

#### **QUARR ROAD**

On its southern side from its junction with the eastern kerblin of Waverley Street for a distance of 55 metres southeast of that point.

On its northern side from a point 23 metres west of its junction with the western kerblin of Hebron Road to a point 68 metres west of that point.

#### **HEBRON ROAD**

On its eastern side from a point 52 metres north of its junction with the northern kerblin of Clos Y Coedwr for a distance 92 metres north of that point.

On its eastern side from the western abutment of Clydach Bridge for a distance 92 metres west then south of that point.

On its western side from its junction with the northern kerblin of Quarr Road for a distance of 92 metres northeast of that point.

#### **WOODSIDE CRESCENT**

On its Northern Side from a point 42 metres from the Western Kerblin of Players Avenue for a distance of 40 metres in a westerly direction.

#### **SCHEDULE 3**

##### **PERMIT HOLDERS ONLY AT ANY TIME**

#### **QUARR ROAD**

On its Western side from a point 30 metres north of its junction with the northern side of Aberclydach Road for a distance of 18 metres in a northerly direction.

#### **SCHEDULE 4**

**LIMITED WAITING BUS/ COACH PARKING – MONDAY TO FRIDAY 8AM – 5PM,  
30 MINUTES NO RETURN WITHIN 30 MINUTES.**

#### **PONTARDAWE ROAD**

On its eastern side from a point 27 metres from its junction with the southern kerblin of the access road to Coed Gwilym Park car park for a distance of 30 metres in a southerly direction.

Dated this 21st May 2025

THE COMMON SEAL OF THE  
COUNCIL OF THE CITY AND  
COUNTY OF SWANSEA

was hereunto affixed

in the presence of

)  
)  
)  
)  
)



Signed by:

116,342

Signed by:

Sally Ann Evans

C5BEAF738FA1491...

Authorised Signatory