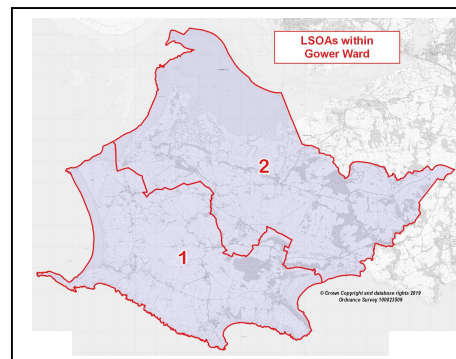


WIMD 2019 Local Summary: LSOAs in Gower Ward

Overall index and individual domain rankings for Lower Super Output Areas (LSOAs) in the Ward

| WIMD 2019 | | Overall Index Rank | | Wales Decile |
|-----------|-----------|--------------------|-------|--------------|
| Rank | LSOA Name | Swansea | Wales | |
| 1 | Gower 1 | 96 | 1513 | 8 |
| 2 | Gower 2 | 107 | 1611 | 9 |

Note: Swansea LSOAs ranked 1-148 (most to least deprived) / **Wales LSOAs ranked 1-1909**. Wales decile groupings (1-10) each include roughly 191 LSOAs.



| Domain: | Income | | Employment | | Health | | Education | |
|---------|---------|-------|------------|-------|---------|-------|-----------|-------|
| LSOA | Swansea | Wales | Swansea | Wales | Swansea | Wales | Swansea | Wales |
| Gower 1 | 135 | 1771 | 135 | 1745 | 137 | 1800 | 112 | 1628 |
| Gower 2 | 130 | 1754 | 130 | 1688 | 135 | 1755 | 135 | 1820 |

| Domain: | Access to Services | | Housing | | Community Safety | | Phys. Environment | |
|---------|--------------------|-------|---------|-------|------------------|-------|-------------------|-------|
| LSOA | Swansea | Wales | Swansea | Wales | Swansea | Wales | Swansea | Wales |
| Gower 1 | 1 | 113 | 52 | 827 | 137 | 1790 | 135 | 1741 |
| Gower 2 | 3 | 217 | 69 | 1117 | 132 | 1744 | 119 | 1632 |

Source: Welsh Index of Multiple Deprivation (WIMD) 2019, Welsh Government, published 27 November 2019.

Notes:

- The Welsh Index of Multiple Deprivation 2019 (WIMD 2019) is the official measure of relative deprivation for small areas in Wales.
- Each domain is based on a range of different indicators, which are weighted and combined to provide domain scores and rankings and the overall index of multiple deprivation. Income and Employment each account for 22% of the total Index score, Health 15%, Education 14%, Access to Services 10%, Housing 7%, and Physical Environment and Community Safety 5% each.
- Further local information on WIMD is available on the Council's website: www.swansea.gov.uk/wimd2019 or www.swansea.gov.uk/deprivation
- The Welsh Government's WIMD pages (including further reports, data and guidance): www.gov.wales/welsh-index-multiple-deprivation

For further information and data from WIMD 2019, please contact:

Swansea Council - Information, Research and GIS

Tel: 07970 610583. E-mail: research@swansea.gov.uk

Strategic Delivery Unit, Resources Directorate, Civic Centre, Swansea, SA1 3SN.

