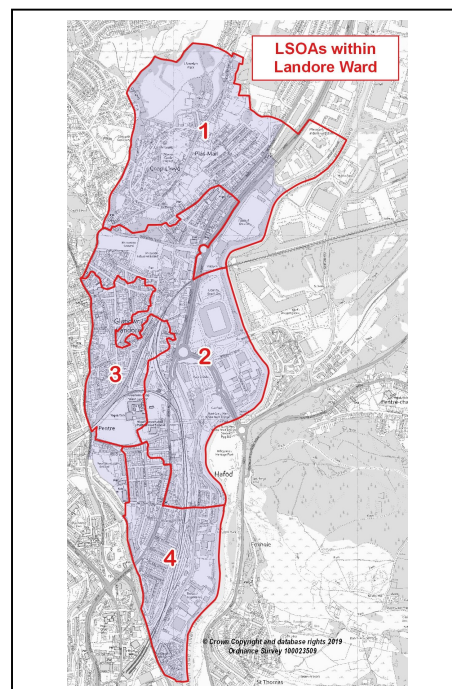


WIMD 2019 Local Summary: LSOAs in Landore Ward

Overall index and individual domain rankings for Lower Super Output Areas (LSOAs) in the Ward

WIMD 2019		Overall Index Rank		Wales Decile
Rank	LSOA Name	Swansea	Wales	
1	Landore 2	22	230	2
2	Landore 3	24	276	2
3	Landore 4	33	363	2
4	Landore 1	44	490	3

Note: Swansea LSOAs ranked 1-148 (most to least deprived) / **Wales LSOAs ranked 1-1909**. Wales decile groupings (1-10) each include roughly 191 LSOAs.



Domain:	Income		Employment		Health		Education	
LSOA	Swansea	Wales	Swansea	Wales	Swansea	Wales	Swansea	Wales
Landore 1	40	401	44	534	59	715	42	515
Landore 2	21	197	21	161	37	382	27	351
Landore 3	28	251	23	217	30	298	28	372
Landore 4	42	411	43	516	38	384	44	572

Domain:	Access to Services		Housing		Community Safety		Phys. Environment	
LSOA	Swansea	Wales	Swansea	Wales	Swansea	Wales	Swansea	Wales
Landore 1	64	1006	15	245	30	334	55	996
Landore 2	92	1354	22	338	8	101	46	882
Landore 3	82	1251	23	341	54	735	12	468
Landore 4	35	664	4	28	58	749	11	411

Source: Welsh Index of Multiple Deprivation (WIMD) 2019, Welsh Government, published 27 November 2019.

Notes:

1. The Welsh Index of Multiple Deprivation 2019 (WIMD 2019) is the official measure of relative deprivation for small areas in Wales.
2. Each domain is based on a range of different indicators, which are weighted and combined to provide domain scores and rankings and the overall index of multiple deprivation. Income and Employment each account for 22% of the total Index score, Health 15%, Education 14%, Access to Services 10%, Housing 7%, and Physical Environment and Community Safety 5% each.
3. Further local information on WIMD is available on the Council's website: www.swansea.gov.uk/wimd2019 or www.swansea.gov.uk/deprivation
4. The Welsh Government's WIMD pages (including further reports, data and guidance): www.gov.wales/welsh-index-multiple-deprivation

For further information and data from WIMD 2019, please contact:

Swansea Council - Information, Research and GIS

Tel: 07970 610583. E-mail: research@swansea.gov.uk

Strategic Delivery Unit, Resources Directorate, Civic Centre, Swansea, SA1 3SN.

