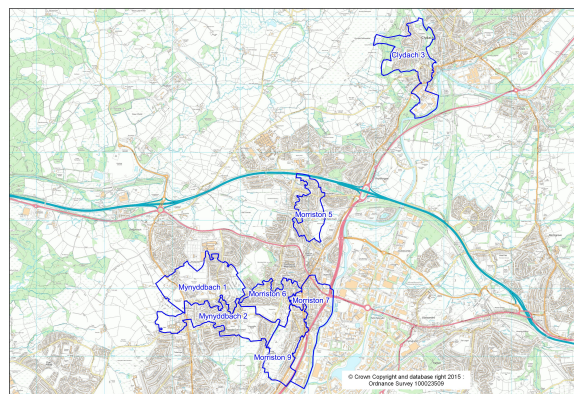


## WIMD 2019 Local Summary: LSOAs in North East Delivery Area

Overall index and individual domain rankings for Lower Super Output Areas (LSOAs) in the area

WIMD 2019		Overall Index Rank		Wales Decile
Rank	LSOA Name	Swansea	Wales	
1	Mynyddbach 1	8	<b>37</b>	1
2	Morryston 5	13	<b>95</b>	1
3	Morryston 7	15	<b>154</b>	1
4	Morryston 9	19	<b>205</b>	2
5	Clydach 3	27	<b>297</b>	2
6	Morryston 6	29	<b>309</b>	2
7	Mynyddbach 2	42	<b>467</b>	3

**Note:** Swansea LSOAs ranked 1-148 (most to least deprived) / **Wales LSOAs ranked 1-1909**. Wales decile groupings (1-10) each include roughly 191 LSOAs.



Domain:	Income		Employment		Health		Education	
LSOA	Swansea	Wales	Swansea	Wales	Swansea	Wales	Swansea	Wales
Clydach 3	20	<b>195</b>	28	<b>307</b>	27	<b>274</b>	24	<b>318</b>
Morryston 5	12	<b>54</b>	10	<b>62</b>	16	<b>142</b>	21	<b>295</b>
Morryston 6	41	<b>406</b>	26	<b>280</b>	24	<b>249</b>	23	<b>316</b>
Morryston 7	17	<b>159</b>	17	<b>120</b>	21	<b>209</b>	31	<b>404</b>
Morryston 9	30	<b>273</b>	24	<b>271</b>	14	<b>137</b>	19	<b>246</b>
Mynyddbach 1	8	<b>36</b>	5	<b>28</b>	7	<b>33</b>	9	<b>99</b>
Mynyddbach 2	36	<b>350</b>	41	<b>495</b>	41	<b>476</b>	32	<b>425</b>

Domain:	Access to Services		Housing		Community Safety		Phys. Environment	
LSOA	Swansea	Wales	Swansea	Wales	Swansea	Wales	Swansea	Wales
Clydach 3	48	<b>806</b>	24	<b>440</b>	63	<b>830</b>	142	<b>1788</b>
Morryston 5	16	<b>506</b>	78	<b>1186</b>	26	<b>315</b>	39	<b>816</b>
Morryston 6	69	<b>1040</b>	27	<b>475</b>	19	<b>238</b>	25	<b>607</b>
Morryston 7	58	<b>945</b>	14	<b>229</b>	2	<b>36</b>	27	<b>633</b>
Morryston 9	38	<b>691</b>	18	<b>258</b>	20	<b>249</b>	48	<b>909</b>
Mynyddbach 1	11	<b>439</b>	76	<b>1158</b>	7	<b>98</b>	120	<b>1637</b>
Mynyddbach 2	47	<b>788</b>	53	<b>887</b>	34	<b>415</b>	68	<b>1183</b>

Source: Welsh Index of Multiple Deprivation (WIMD) 2019, Welsh Government, published 27 November 2019.

**Notes:**

- The Welsh Index of Multiple Deprivation 2019 (WIMD 2019) is the official measure of relative deprivation for small areas in Wales.
- Each domain is based on a range of different indicators, which are weighted and combined to provide domain scores and rankings and the overall index of multiple deprivation. Income and Employment each account for 22% of the total Index score, Health 15%, Education 14%, Access to Services 10%, Housing 7%, and Physical Environment and Community Safety 5% each.
- Further local information on WIMD is available on the Council's website: [www.swansea.gov.uk/wimd2019](http://www.swansea.gov.uk/wimd2019) or [www.swansea.gov.uk/deprivation](http://www.swansea.gov.uk/deprivation)
- The Welsh Government's WIMD pages (including further reports, data and guidance): [www.gov.wales/welsh-index-multiple-deprivation](http://www.gov.wales/welsh-index-multiple-deprivation)

For further information and data from WIMD 2019, please contact:

**Swansea Council - Information, Research and GIS**

Tel: 07970 610583. E-mail: [research@swansea.gov.uk](mailto:research@swansea.gov.uk)

Strategic Delivery Unit, Resources Directorate, Civic Centre, Swansea, SA1 3SN.

