

**THE COUNCIL OF THE CITY AND  
COUNTY OF SWANSEA  
CYNGOR DINAS A SIR ABERTAWE  
TEMPORARY ROAD CLOSURE  
SOLVA ROAD (PART), CLASE, SWANSEA  
NOTICE 2022**

**NOTICE** is hereby given that the Council of the City and County of Swansea in pursuance of its powers under the Road Traffic Regulation Act 1984 (as amended) intend to close the above-mentioned road. In order for City & County of Swansea Council, Planned Maintenance Section to undertake P.A.T.C.H resurfacing works at the above location, it will be necessary to temporarily close the above road in part to vehicular traffic.

**SCHEDULE  
TEMPORARY ROAD CLOSURE  
SOLVA ROAD (PART), CLASE, SWANSEA**

**SCHEDULE - TEMPORARY ROAD CLOSURE**  
**SOLVA ROAD (PART), CLASE**

Solva Road in an south-westerly direction from its junction with Long View Road to its junction with Creswell Road, a distance of approximately 70 metres.

The alternative route for vehicular traffic will be via the unaffected section of Solva Road, Rheidol Avenue and Long View Road, a distance of approximately 1.3 kilometres.

This route will operate in the opposite direction.

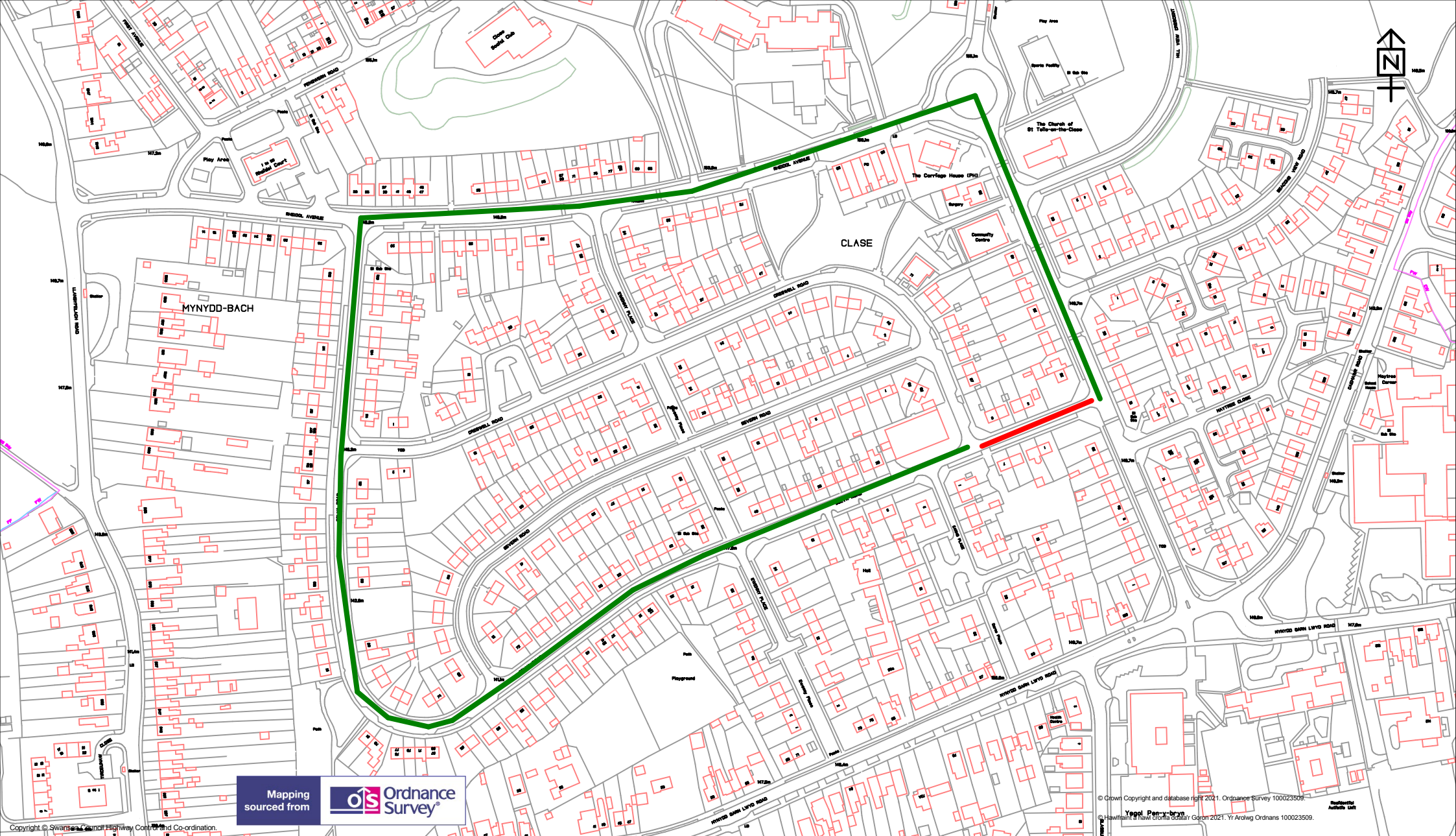
**Access for emergency vehicles to be maintained at all times.**

The closure will operate from **Tuesday 25th January 2022** for 5 days (Or until the works are completed whichever is the sooner). It is anticipated the works will take 2 days to complete (09:30-15:00).

Dated this 24<sup>th</sup> January 2022

**TRACEY MEREDITH  
CHIEF LEGAL OFFICER / PRIF SWYDDOG CYFREITHIOL  
LEGAL, DEMOCRATIC SERVICES & BUSINESS INTELLIGENCE  
GWASANAETHAU CYFREITHIOL, DEMOCRATAIDD A DEALLUSRWYDD  
BUSNES  
CIVIC CENTRE  
CANOLFAN DDINESIG  
SWANSEA  
ABERTAWE  
SA1 3SN**

If you have any queries about this Notice please ring Dean Howard on 01792 841675



Mapping sourced from Ordnance Survey

© Crown Copyright and database right 2021. Ordnance Survey 100023509.  
 © Hafren Aelwedd Cyf. 2021. Yr Arolwg Ordnans 100023509.

**City & County of Swansea**  
 Cinas A Sir Abertawe

# TEMPORARY TRAFFIC REGULATION ORDER

**KEY**

Temporary Road Closure

Alternative Route

Scale		1:2969
Drawn	DH	Checked DH

**Highways and Transportation**  
 Mr Stuart Davies,  
 Head of Highways  
 City and County of Swansea,  
 Station Road, Players Industrial Estate,  
 Clydach, Swansea, SA6 5BJ

## SOLVA ROAD (PART), CLASE, SWANSEA.

Revision	Date
A	21/01/2022

Dwg/Ref.No.  
**3307**