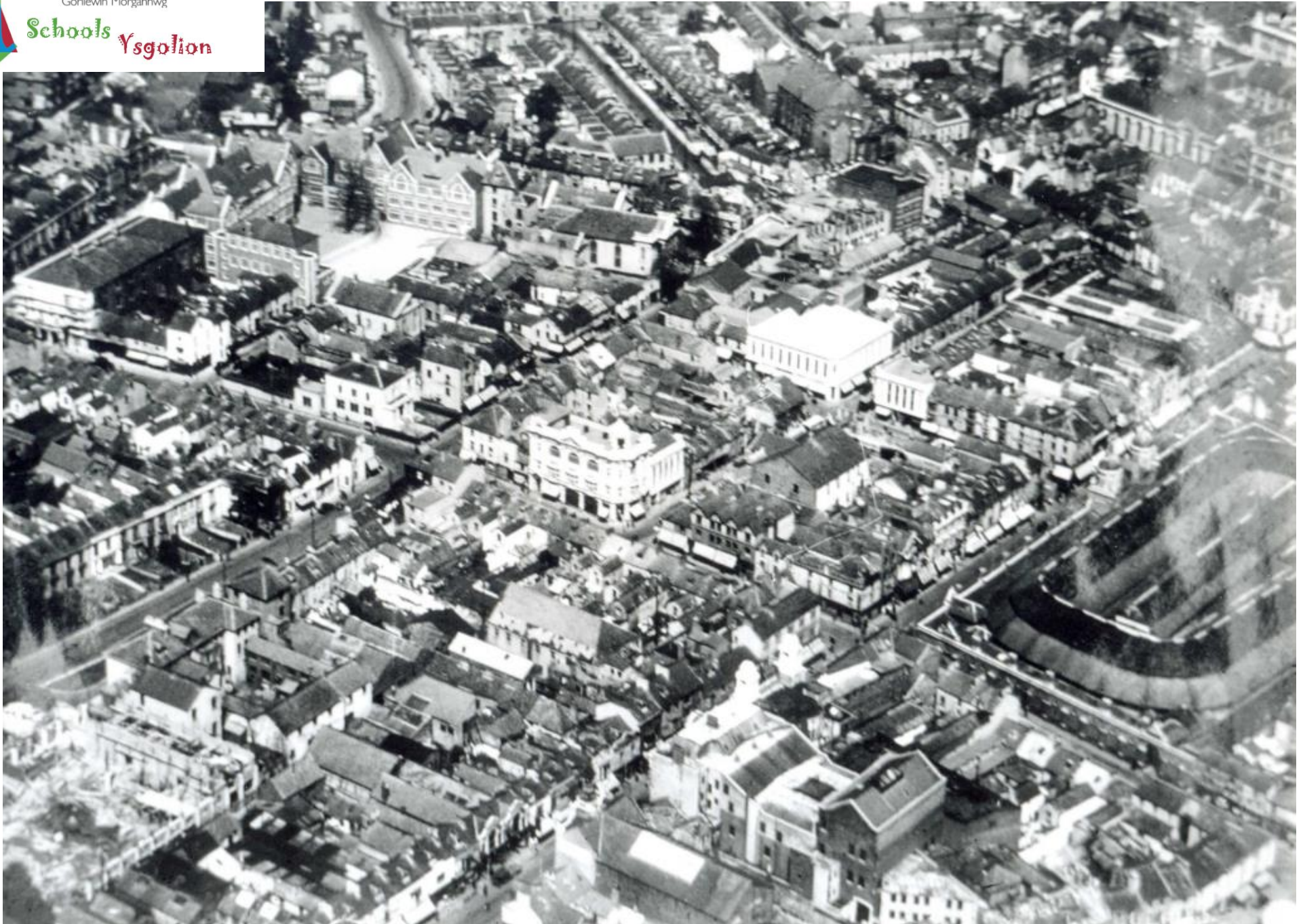


# Pre Blitz



# Pre Blitz



# Pre Blitz



# Pre Blitz



Kings Dock, Swansea.

# Pre Blitz



# Pre Blitz



# Pre Blitz



# Pre Blitz





# Pre Blitz



# Pre Blitz

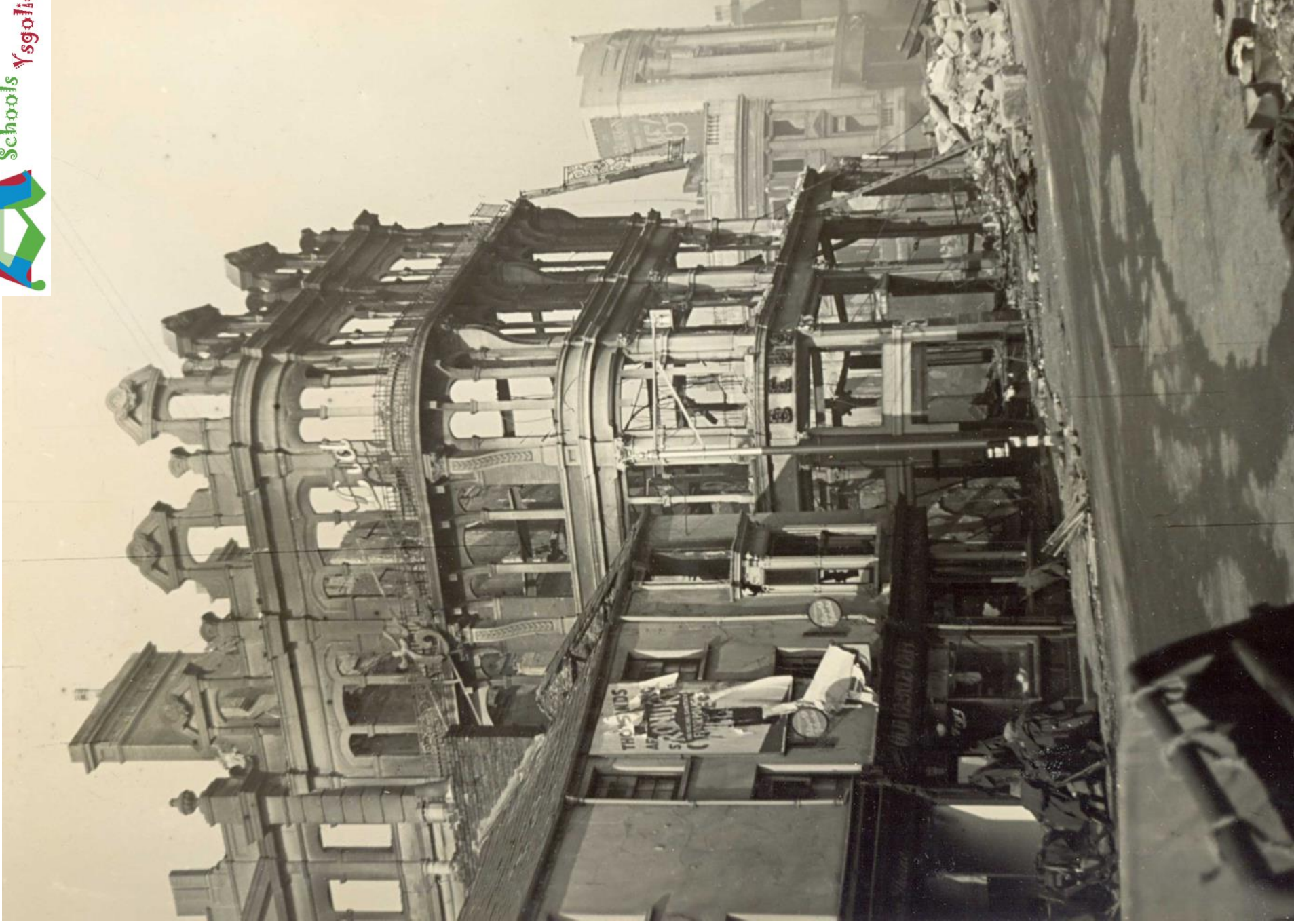


# Post Blitz



END OF THE FACTORIAL  
1945

# Post Blitz



# Post Blitz



# Post Blitz



# Post Blitz



# Post Blitz





# Post Blitz



# Post Blitz



# Post Blitz



# Post Blitz



Ben Evans Department Store after the Three Nights' Blitz

Swansea on fire during the Three Nights' Blitz

The Blitz on the Prince of Wales Dock damaged the 'J' Shed

Workers clearing the rubble after the Kings Dock Blitz in 1941

St Mary's Church, Swansea after the Three Nights' Blitz

The town centre devastated by the Three Nights' Blitz

Swansea Market after the Three Nights' Blitz

Lots of shops on Union Street were destroyed by the Three Nights' Blitz

Windows blown out in a building on Temple Street after the Three Nights' Blitz

Shops and houses were destroyed on Gower Street (Kingsway)